

The Complete Geological Data Management Solution

FUSION



**DHLOGGER
SAMPLE STATION
MINEMAPPER 3D
REPORT MANAGER
LIMS**

WHO USES FUSION:

- ✓ Project Geologists
- ✓ Geology/Exploration Managers
- ✓ Database Administrators

FUSION

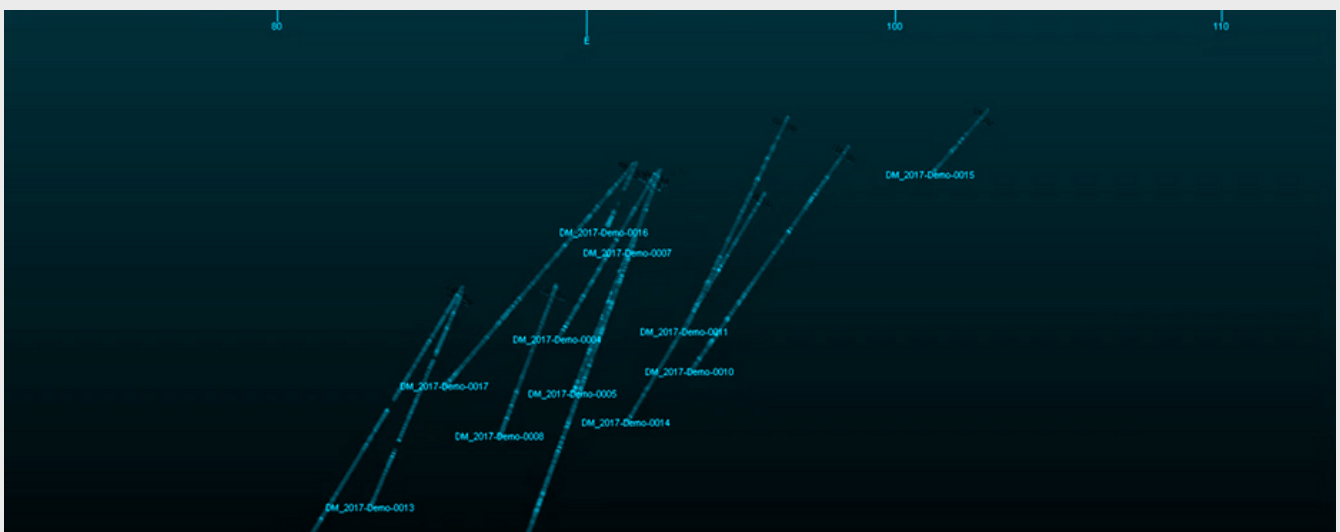
Fusion is a comprehensive geological data management system designed to combine all exploration and production data into a common database for reporting and analysis. Geological, geochemical, geotechnical, geophysical, QA/QC, mapping, surveying and other field data can be effortlessly and securely managed within the system. Fusion ensures maximum security by controlling user access to project data, allowing only designated users to retrieve update and query data from Fusion Servers. All Fusion administration and management of reference lists are done centrally. This includes creating and modifying tables, users, business units, rock types, and other information centrally and most importantly, only once.

FEATURE HIGHLIGHTS

- Distributed database with centralised control.
- Full security model to control access to data & system functions.
- Check-in and check-out technology ensures data integrity.
- Focus lists of drillholes and samples through user-defined filters and filter operators.
- Seamless integration with Studio RM/EM and other mine planning packages.
- Scalable from single-site to multi-site installations.
- Schedule data transfer in off-peak times.

KEY BENEFITS

- Low-cost management of high-value accurate and actionable data.
- Improve organisational efficiency and individual accountability.
- Facilitate the adoption of standardised operating procedures.
- Consolidate data from heterogeneous data sources into a secure and centralised data repository.
- Ensure regulatory compliance by providing a high level of transparency and auditability.
- Enable collaboration between team members while maintaining a consistent information infrastructure.



FUSION 9 VERSION 5.0

Silent Lab Import Routine - You can schedule and automate your import routine without requiring any user interaction in DHLogger, saving you a lot of time and effort.

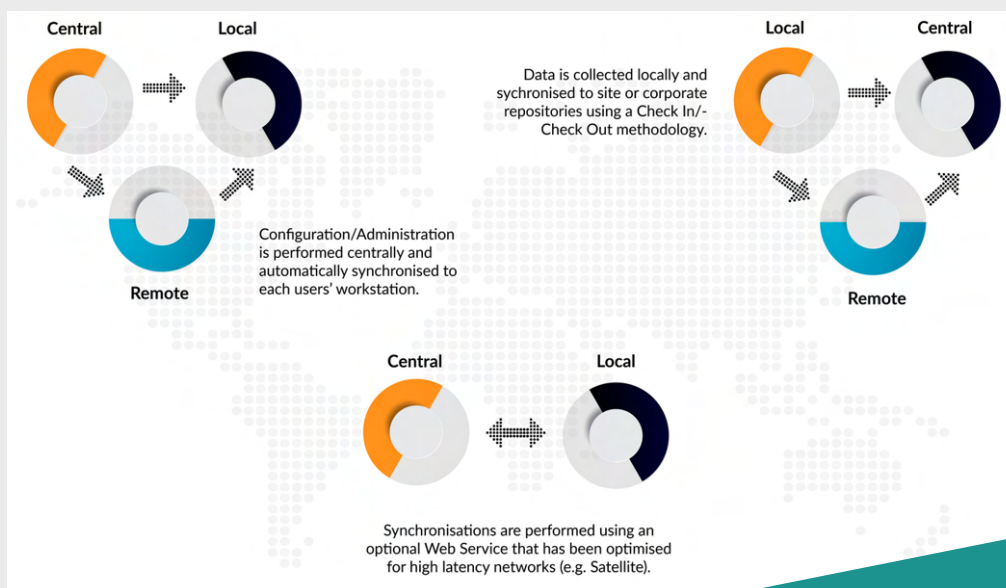
3D Hole Visualisation - Are you in need of a 3D visualisation tool? Now you can visualise and reference drillhole data completely in 3D, directly from the logging screen in DHLogger.

Central Database Import - Quickly and easily import data directly into any table in the central database.

Core Photo Management - Photos can be managed and viewed directly in DHLogger. You have the benefit of referencing these photos while logging, as well as making modifications such as adding personal notes directly on the photos.

Blast Hole Module - Quickly insert new blast holes into the database via a single logging form with enhanced validation options. You can also make use of dedicated import, export, and reporting modules.

Copy Existing Rows - With one click you can inherit data from a previously created record. Streamline your logging and save a significant amount of the time with this new data copy feature.



CONTACT US



www.dataminesoftware.com

AUSTRALIA | BRAZIL | CANADA | CHILE | CHINA |
 ECUADOR | GHANA | INDIA | INDONESIA |
 KAZAKHSTAN | MALAYSIA | MEXICO | MONGOLIA |
 PERU | PHILIPPINES | RUSSIA | SOUTH AFRICA |
 TURKEY | UNITED KINGDOM | USA